

Dekspike™

1/4" mushroom head  
For insulation and membrane attachment to structural concrete roof decks

- Compresses at 3 contact points to match the tolerance of the drilled hole.
- Can withstand dynamic loads induced by wind loading.



Applications

**Dekspike Structural Concrete Roofing Anchor**

Materials:

- Structural concrete:  
Min penetration: 1-1/4"  
(Min penetration for 1-1/4" length: 7/8")

Composition thickness range of Dekspike 1-1/2" through 16":

Anchor length less 1-1/4"  
(Min embedment: 1-1/4")

Composition thickness range of Dekspike 1-1/4": 3/8"  
(Min embedment: 7/8")

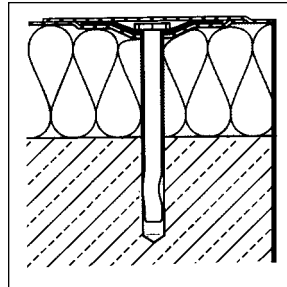
Min FM approved insulation board for concrete application: 1/2"

Min FM approved penetration: 1-1/4"

Shortest FM approved length for insulation attachment: 2"

Use with:

- Batten Bar
- Steel insulation plates
- Steel membrane plates



Head: Mushroom Head

Head Height: .120" max

Head Dia: .500" max

Shank Dia: .239"

**Strength (lbs ult.):**

Tensile (at 1-1/4" embedment): 1100

**Pull-out: (lbs avg.):**

4000 psi (1-1/4" penetration): 1550

Notes

Dimensions are nominal inches unless noted. Tension strength (pull-out) based on 1-1/4" embedment depth and 2500 psi concrete. Pull-out strength is 1100 lbs ult. in 2500 psi concrete (FM J.I. No. 0Y0A8.AM) at 1-1/4" penetration depth.

Selection

Length	Part No.	Carton Wt. (lbs)	Carton Qty.	Skid Qty.
1-1/4"	N5110-999	14	500	60,000
1-1/2"	N5120-999	16	500	60,000
2"	N5130-999	21	500	60,000
2-1/2"	N5140-999	27	500	42,000
3"	N5150-999	35	500	18,000
3-1/2"	N5160-999	40	500	18,000
4"	N5170-999	44	500	18,000
4-1/2"	N5180-999	48	500	18,000
5"	N5190-999	55	500	18,000
5-1/2"	N5200-999	59	500	18,000
6"	N5210-999	32	250	21,000
6-1/2"	N5220-999	35	250	21,000
7"	N5230-999	38	250	21,000
7-1/2"	N5240-999	40	250	21,000
8"	N5250-999	43	250	21,000
9"	N5270-999	47	250	9,000
10"	N5290-999	52	250	4,500
11"	N5310-999	12	100	8,000
12"	N5330-999	13	100	8,000
13"	N5350-999	14	100	5,000
14"	N5370-999	15	100	5,000

Continued on following page

## 1/4" mushroom head

For insulation and membrane attachment on structural concrete roof decks

## Dekspike™

### Approvals

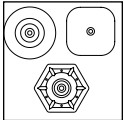
Dekspike fasteners and plates are Factory Mutual approved for the attachment of insulation board and/or roof cover to roof deck.

### Installation

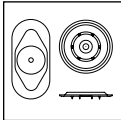
Tools: ANSI 1/4" diameter (.268 – .260 dia) drill bit. Drill hole depth at least 1/2" beyond the anticipated embedment depth. Clean the hole and drive Dekspike flush against the plate or material being fastened.

### Options

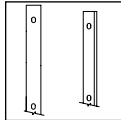
**Insulation  
Plates**



**Membrane  
Plates**



**Termination  
Product**



**Drill Bits**



**Coatings**

